

Ruskin Road

---

Hove





## We know just the place...



This stunning four-bedroom terraced house with delightful garden is located in the much sought-after Poet's Corner area of Hove. The property has been beautifully renovated throughout managing to create a wonderful balance between character features and contemporary living. Ruskin Road is excellently positioned within Hove; Aldrington and Hove Stations are both a short walk away, ideal for anyone commuting.

On entering the property, a hallway provides access to all ground floor rooms. At the front of the property is the reception, which is a good size and adorned with a range of lovely period features. Those include: high ceilings, wooden flooring, delicate cornicing, an ornate fireplace and square fronted bay window. Adjacent is the dining room, that is a similar size and has many of the same character features. There is direct access to the garden from the dining room. To the rear is the excellently sized kitchen with bi-folding doors that lead out into the garden. The kitchen has been fitted with contemporary units, integrated appliances and a fantastic breakfast bar. The ground floor also has a conveniently positioned W/C.

On the first floor, there are three well proportioned double bedrooms, each is bright and has tall ceilings. The bedroom to the front of the property contains a wonderful square fronted bay window, an intricate fireplace and built-in storage space. There is also a large family bathroom. On the second floor, there is another good size bedroom, well-lit by the addition of a Juliet balcony and Velux windows. The room also has excellent storage facilities including considerable eaves space and a beautiful en suite bathroom.

The property also offers a wonderful partially terraced garden to the rear, which has been brilliantly landscaped and is fitted with an electric awning and built-in lighting.

Situated in the Poet's Corner area, this beautiful terraced house is a moments' walk from the range of amenities available on Portland Road.



4



2

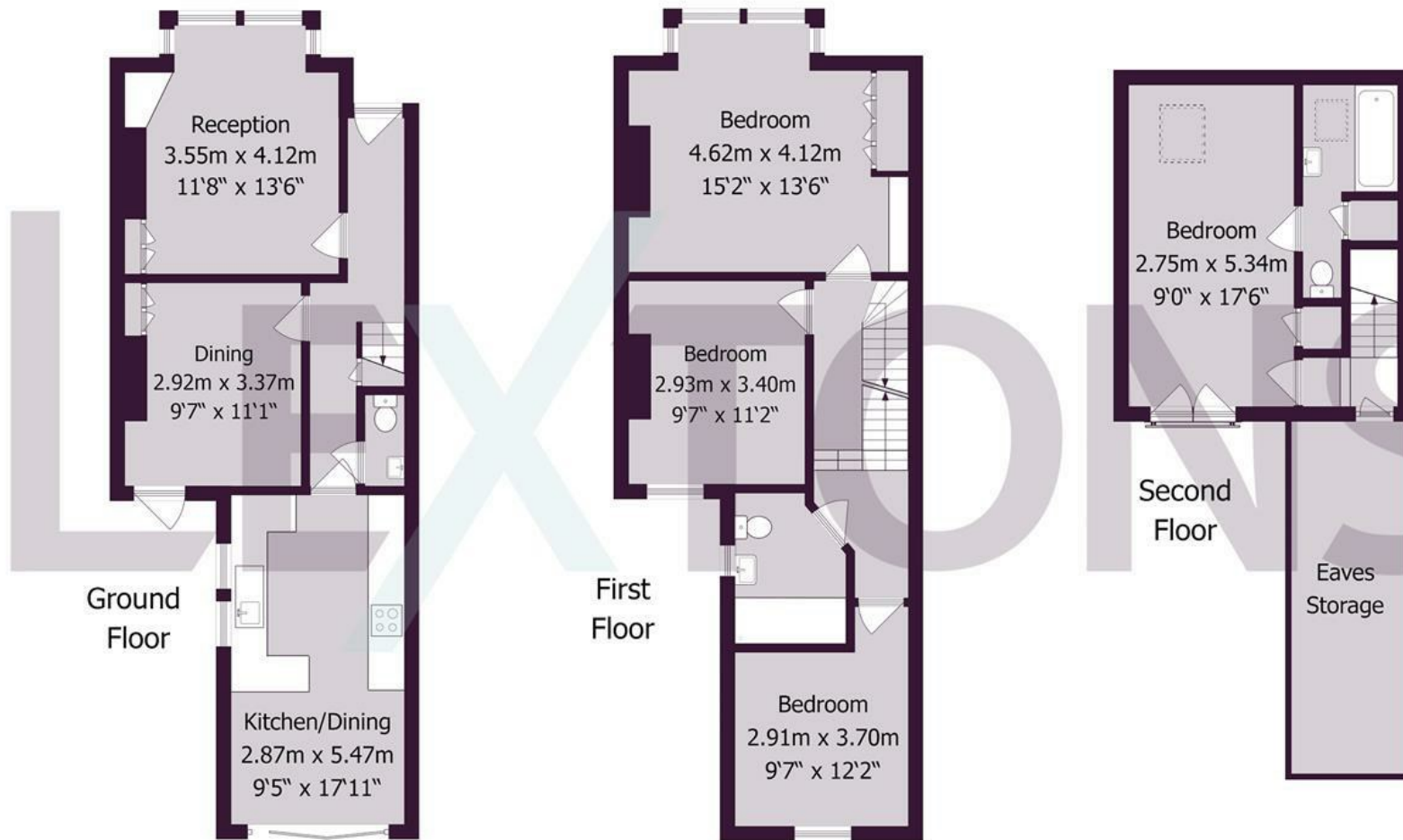


2



TBC





Approximate gross internal floor area 133.5 sq m/ 1437 sq ft

Whilst every care has been taken to ensure accuracy, dimensions are approximate and for illustrative purposes only.

Created by Property Photography UK for Lextons. All rights reserved.

Meet us here...  
174 Church Road  
Hove  
BN3 2DJ

We aim to make our particulars both accurate and reliable. However they are not guaranteed; nor do they form part of an offer or contract. If you require clarification on any points then please contact us, especially if you're traveling some distance to view. Please note that appliances and heating systems have not been tested and therefore no warranties can be given as to their good working order.

